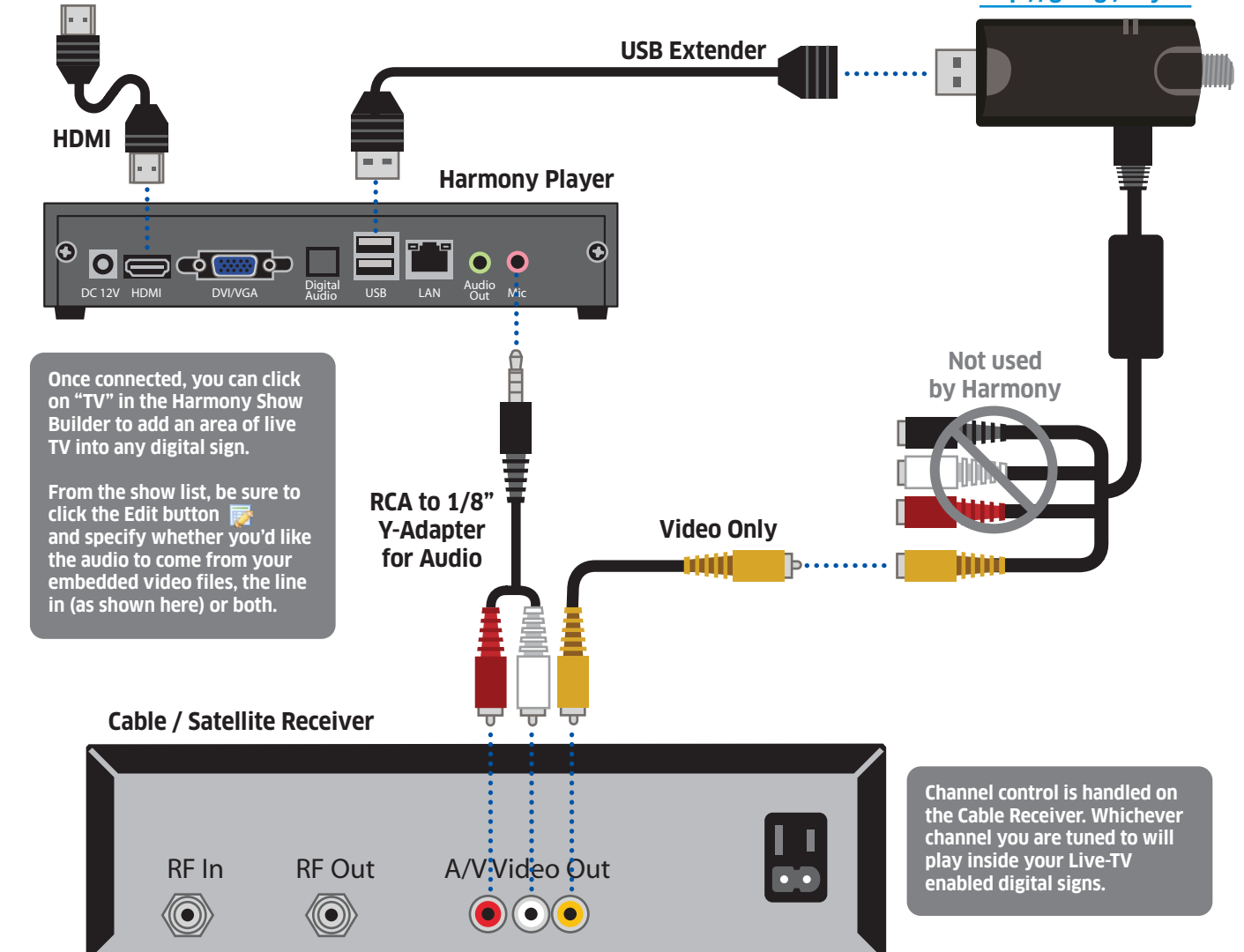


Using Harmony with Live TV

Television



Harmony Approved
Video Capture Device:

<http://goo.gl/KsyAb>

Once connected, you can click on "TV" in the Harmony Show Builder to add an area of live TV into any digital sign.

From the show list, be sure to click the Edit button and specify whether you'd like the audio to come from your embedded video files, the line in (as shown here) or both.

Channel control is handled on the Cable Receiver. Whichever channel you are tuned to will play inside your Live-TV enabled digital signs.